

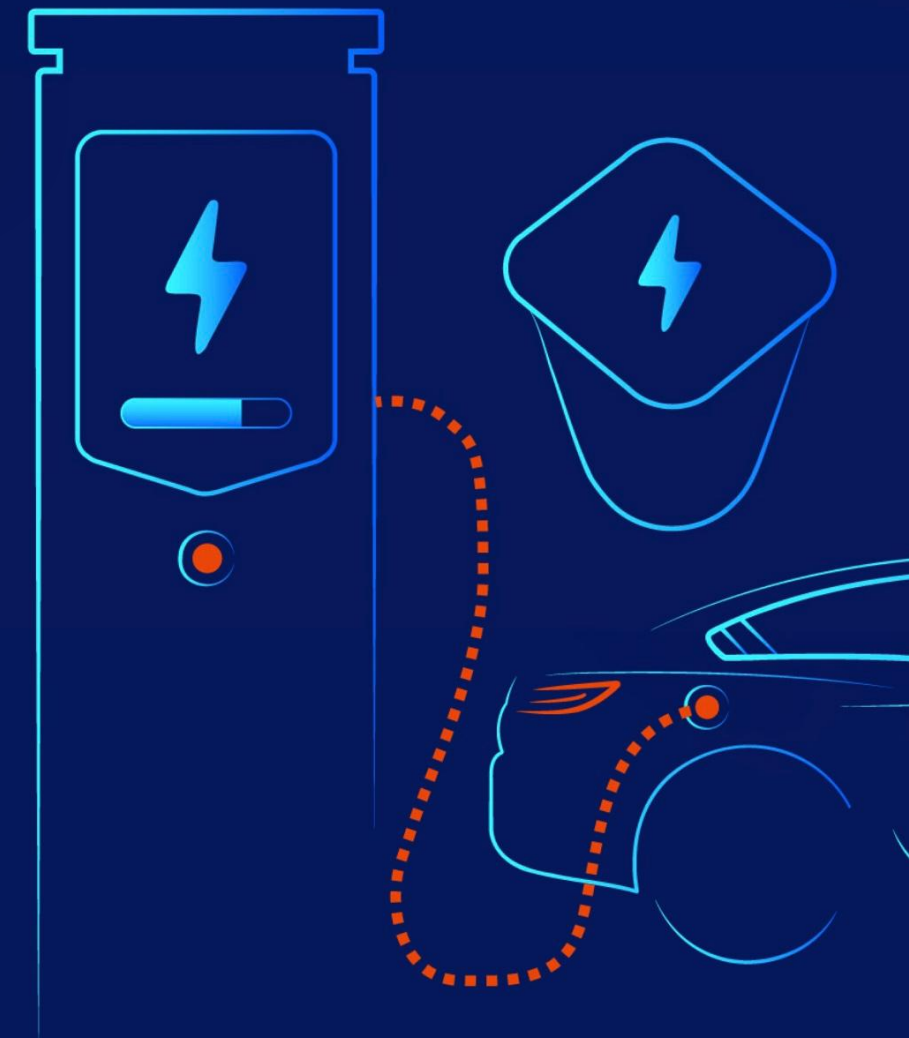
Product Catalog

We provide fast and flexible OEM & ODM service for EVSE.



Driving Innovation in EV Charging Technology

Shenzhen Anari Energy Co.,Ltd.



CONTENT

1

About Anari

2

**Turnkey
Solutions**

3

Products

4

**Vision
& Mission**



About Anari

Shenzhen Anari Energy Co., Ltd. (Anari for short), as a subsidiary of Boyang group, started independent operation in 2021. Anari's businesses include R&D, production and sales of EV chargers.

Our headquarters is in Shenzhen. After 4 years development, we have built offices and branches in Xi'an, Turkey and the UK. We have served over 100 customers spread in 22 countries.





Partners



LONGi

 **DELTA** 台达

**Amphenol
AUTOMOTIVE**

payter

CATL 宁德时代

 英飞源技术
INFY POWER

 **PHOENIX
CONTACT**

 **PAX**

UUGreenPower

EVE Energy

 **workersbee**

 **RNL**
— 瑞凯诺 —

BYD

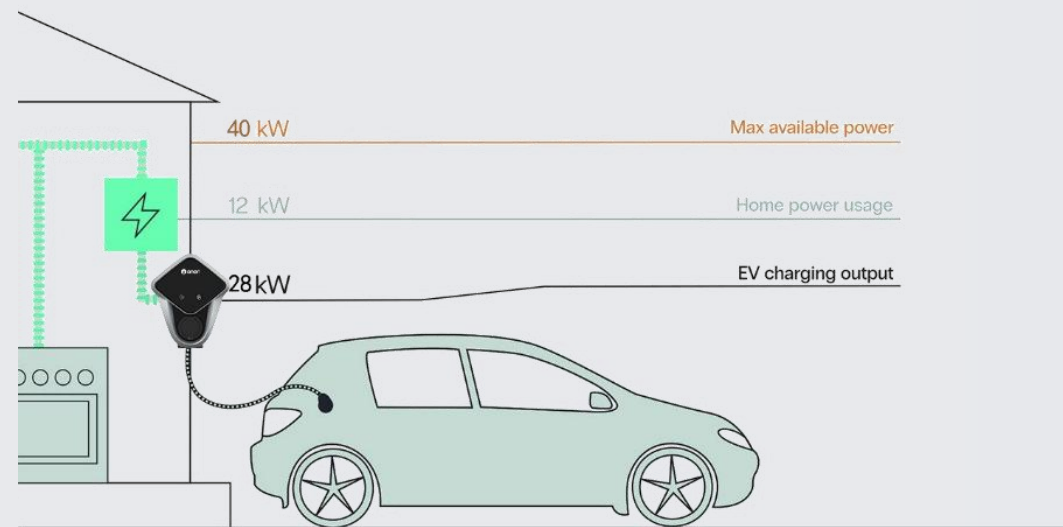

HUAWEI

 **TÜV
SUD**

SGS



Turnkey Solutions



DLB Solutions

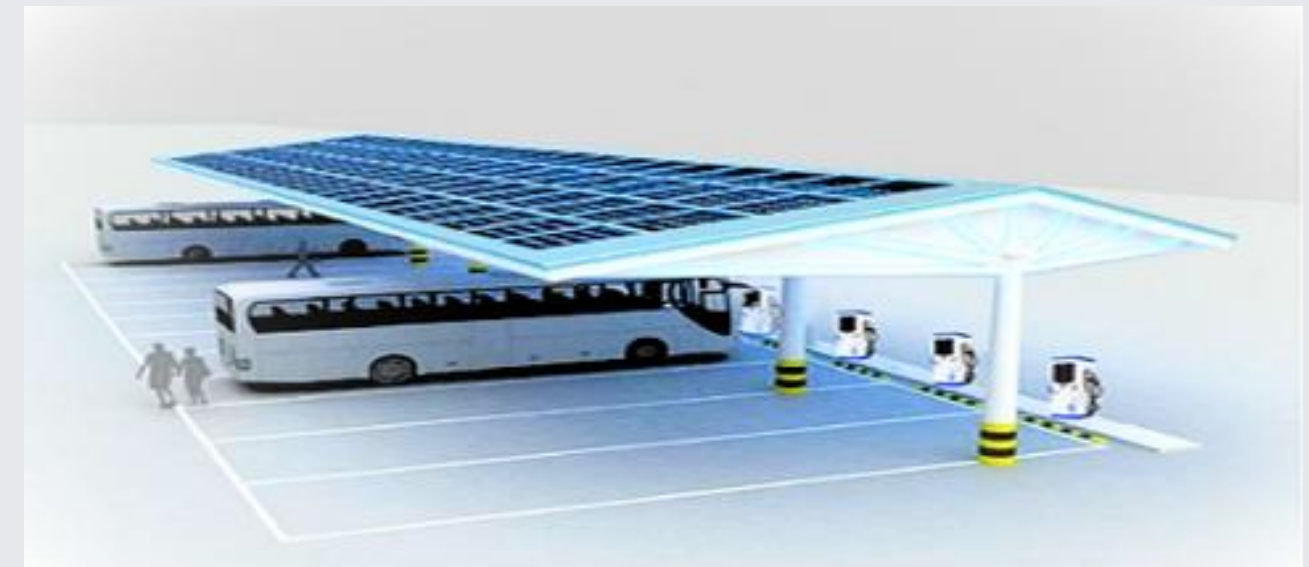
What We Can Provide?



E-Family Car Charging



E-Truck Charging



E-Bus Charging with PV carport



Products



Aquila DC Series

- Up to 240kW fast charging, supports CCS1, CCS2, GB/T, CHAdeMO | Mode 4;
- 5m(8m and 10m optional), 7-inch HD touch screen;
- 43-inch advertising screen, targeted audience, precise placement
- Secure RFID/APP access, 2-year warranty, CE certified



| | | |
|-------------------------|-----------------------------|---|
| DC Output | Charging mode | CCS1 & CCS2 & GB/T& CHAdeMO Mode 4 |
| | Output power | 60~240kW |
| | Output voltage | DC: 200~1000VDC |
| | Output current | CCS1/ 2 200A, CHAdeMO 125A, GB/T 250A |
| | Cable length | 5m (8m and 10m optional) |
| | Number of connectors | 2 Connectors with CCS1/2 or GB/T or CHAdeMO |
| | Peak efficiency | ≥96% at normal output power |
| AC Input | Earthing system | 3P+N+PE |
| | Input voltage | 400VAC±10% |
| | Input frequency | 50/60Hz |
| | Power factor | ≥0.99 |
| | THDi | ≤5% |
| | Stable Voltage Accuracy | ≤±0.5% |
| | Stable Current Accuracy | ≤±1% |
| General characteristics | IP and Ik rating | Ip54, Ik08 |
| | Operating altitude | ≤2000m |
| | Operating temperature range | -30°C~+70°C(Power output reduces once Temp higher than 55 °C) |
| | Operating humidity range | Relative Humidity 5%~95% |
| | Storage temperature range | -40°C~+70°C |
| User Interface | Status indication | LED /LCD /APP |
| | Screen type | 7-inch HD Touch Screen |
| | Connectivity | 4G, Ethernet |
| | User authentication | APP, RFID (ISO/IEC 14443 A/B, ISO/IEC 15693, Mifare1 RFID reader).Credit card(POS Terminal is optional) |
| | Communication Protocol | OCPP1.6J |
| Protection | Safety design | Over voltage protection, under voltage protection, overload protection, short circuit protection, leakage protection, grounding protection, over temperature protection, low temperature protection, lightning protection |



Products

- Up to 360kW fast charging, supports CCS1, CCS2, GB/T, CHAdeMO
- Easy installation, 5m cable, 10-inch touch screen
- Durable PC + ABS housing, IP54 all-weather protection
- Secure RFID/APP access, 2-year warranty, CE certified



Vulco DC Series

| | | |
|-------------------------|-----------------------------|---|
| DC Output | Charging Mode | CCS1 & CCS2 & GB/T & CHAdeMO Mode 4 |
| | Output Power | 60kW~360kW + AC 7kW / 22kW |
| | Output Voltage | DC: 200~1000VDC AC: 230VAC (7kW) / 400VAC (22kW) |
| | Output Current | CCS1/2: 200A, CHAdeMO: 125A, GB/T: 250A |
| | Cable Length | 5m (8m and 10m optional) |
| | Number of Connectors | 2 Connectors (CCS1/2, GB/T, CHAdeMO) + 3rd additional AC Type 2 (optional) |
| | Peak Efficiency | ≥96% at normal output power |
| AC Input | Earthing System | 3P+N+PE |
| | Input Voltage | AC380V±20% |
| | Input Frequency | 45~65Hz |
| | Power Factor | ≥0.99 |
| | THDi | ≤5% |
| | Stable Voltage Accuracy | ≤±0.5% |
| | Stable Current Accuracy | ≤±1% |
| General Characteristics | IP and IK Rating | Ip54, Ik08 |
| | Operating Altitude | ≤2000m |
| | Operating Temperature Range | -30°C~+70°C (Power output reduces when temperature exceeds 50°C) |
| | Operating Humidity Range | 5%~95% |
| | Storage Temperature Range | -40°C~+70°C |
| | Mounting | Floor Standing |
| | Cooling Type | Forced air cooling |
| | Dimensions (H * W * D) | 750mm * 700mm * 1800mm & 900mm * 750mm * 1800mm (Length * Width * Height) |
| User Interface | Status Indication | LED/LCD/APP |
| | Screen Type | 10-inch HD Touch Screen |
| | Connectivity | 4G, Ethernet |
| | User Authentication | APP, RFID (ISO/IEC 14443 A/B, ISO/IEC 15693, Mifare1 RFID), Credit Card (optional) |
| | Communication Protocol | OCPP1.6J |
| Protection | Safety Design | Over voltage protection, under voltage protection, overload protection, short circuit protection, leakage protection, grounding protection, over temperature protection, low temperature protection, lightning protection |



Products

- Hassle-free experience with easy installation
- Tailor-made design
- 20kW/30kW/40kW alternative compatible
- Touch screen ensures convenient use



Castor DC Series

| | | |
|-----------------------------|-----------------------------|---|
| DC Output | Charging mode | CCS2 or GB/T |
| | Output power | 20/30/40kW |
| | Output voltage | DC: 200~1000VDC |
| | Cable length | 5m (8m and 10m optional) |
| | Number of connectors | 20kW single Connector, 30/40kW 2 Connectors |
| | Peak efficiency | ≥96% at normal output power |
| AC Input | Earthing system | 3P+N+PE |
| | Input voltage & Current | AC380V±20% |
| | Input frequency | 45~65Hz |
| | Power factor | ≥0.99 |
| | THDi | ≤5% |
| | Stable Voltage Accuracy | ≤±0.5% |
| | Stable Current Accuracy | ≤±1% |
| General characteristics | IP and IK rating | Ip54, Ik08 |
| | Operating altitude | ≤2000m |
| | Operating temperature range | -30℃~+70℃ (Power output reduce once Temp higher than 55 ℃) |
| | Operating humidity range | Relative humidity 5%~95% |
| | Storage temperature range | -40℃~+70℃ |
| | Cooling type | Forced air cooling |
| | Dimensions (H * W * D) | 710mm*620mm*350mm |
| User Interface | Status indication | LED/LCD/APP |
| | Screen type | 7-inch HD Touch Screen |
| | Connectivity | Ethernet |
| | User authentication | APP, RFID (ISO/IEC 14443 A/B, ISO/IEC 15693, Mifare1 RFID reader), Credit Card(POS Terminal is optional) |
| | Communication Protocol | OCPP1.6J |
| Certification and standards | Safety and Compliance | CE/ IEC61851, IEC 62196, ISO 15118-3, DIN70121, DIN70122, CHAdEMO 1.2, GBT20234, GB/T18487, GB/T27930, NBT33008, NBT33002 |
| | Certification | CE |
| Protection | Safety design | Over voltage protection, under voltage protection, overload protection, short circuit protection, leakage protection, grounding protection, over temperature protection, low temperature protection, lightning protection |



Products

- Hassle-free experience with easy installation and tailored charging solutions
- Flexible configuration with modular power options (180kW, 240kW, 300kW, 360kW)
- High power density per unit volume for efficient performance
- 7" LCD touch screen for real-time charging status display
- CE-certified with multi-language support and active data saving during power loss



DC Super Fast Charging Station

| Specification | Model Number | ANZ-D180F1DC-H | ANZ-D240F1DC-H | ANZ-D300F1DC-H | ANZ-D360F1DC-H |
|--------------------------|-----------------------|---|----------------|----------------|----------------|
| | AC Power Input Rating | 400 VAC +/- 15% (50 Hz or 60 Hz) | | | |
| | Connector Types | 3P + N + PE | | | |
| | Input Current | 254A | 338A | 423A | 508A |
| | DC Output Voltage | 200~1000 Vdc | | | |
| | Output Power | 180kW | 240kW | 300kW | 360kW |
| | Outlet current | CCS 125A, 200A; GB/T 125A, 200A, 250A; ChadeMO 125A | | | |
| | Cable Length | 2 * CCS2 5m/8m/10m | | | |
| User Interface & Control | Charging Control | Plug and Charge, App, RFID(ISO14443) | | | |
| | LCD Display | 7" LCD touch screen | | | |
| | Connectivity | 4G, Ethernet | | | |
| | OCPP Protocol | OCPP1.6J | | | |
| | Multilanguage | English, Turkish, French, Spanish, Russian and Chinese | | | |
| Environmental | Storage Temperature | -40°C to + 60°C | | | |
| | Operating Temperature | -30°C to + 55°C (power de - rating applies) | | | |
| | Operating Humidity | 5 -95 % Rh non- condensing | | | |
| | Cooling Method | Natural Cooling | | | |
| Protection | IP/IK Code | IP54 | | | |
| | Standby Power | 50W*N(Plug) | | | |
| | Electrical Protection | Overcurrent, Overvoltage, Undervoltage, Ground Fault Including DC Leakage Protection, Integrated Surge Protection | | | |



Products

- Compact high integration design
- Charging efficiency up to 96%
- Flexible power distribution
- 21 items of active safety detection



DC Fast Charging Station

| | | | | | |
|--------------------------|-----------------------|---|---------------|----------------|----------------|
| Power Specification | Model Number | ANZ D60F1DC-H | ANZ D80F1DC-H | ANZ D120F1DC-H | ANZ D160F1DC-H |
| | AC Power Input Rating | 400 VAC +/- 15% (50 Hz or 60 Hz) | | | |
| | Connector Types | 3P + N + PE | | | |
| | Input Current | 110A | 146A | 220A | 293A |
| | DC Output Voltage | 150~750 Vdc | | | |
| | Output Power | 60kW | 80kW | 120kW | 160kW |
| | Outlet current | CCS 125A, 200A; GB/T 125A, 200A, 250A; ChadeMO 125A | | | |
| | Cable Length | 2 * CCS2 5m/8m/10m | | | |
| User Interface & Control | Charging Control | Plug and Charge, App, RFID(ISO14443) | | | |
| | LCD Display | 7" LCD touch screen | | | |
| | Connectivity | 4G, Ethernet | | | |
| | OCPP Protocol | OCPP1.6J | | | |
| | Multilanguage | English, Turkish, French, Spanish, Russian and Chinese | | | |
| Environmental | Storage Temperature | -40°C to + 60°C | | | |
| | Operating Temperature | -30°C to + 55°C (Power de - rating Applies) | | | |
| | Operating Humidity | 5 -95 % RH Non- condensing | | | |
| | Cooling Method | Natural Cooling | | | |
| Protection | IP/IK Code | IP54 | | | |
| | Standby Power | 50W*N(Plug) | | | |
| | Electrical Protection | Overcurrent, Overvoltage, Undervoltage, Ground Fault Including DC Leakage Protection, Integrated Surge Protection | | | |



Products



Gaia AC Series

- Solar compatible: All day charging with PV surplus power and off-peak electricity
- Long lasting: Up to 10000 times charging
- Compatible: Compatible with 99% of electric vehicles on the market
- Easy to Install: Hassle-free experience with easy installation



| | | | | |
|------------------------|-----------------------|---|-----------|-----------|
| Power Specification | Model Number | A07W1SC | A11W1SC | A22W1SC |
| | AC Power Input Rating | 230VAC | 380VAC | 380VAC |
| | | (1-Phase) | (3-phase) | (3-phase) |
| | Rated Frequency | 50/60Hz | | |
| | Input Current | 32A | 16A | 32A |
| | Output Power | 7.4kW | 11kW | 22kW |
| User Interface Control | Connector Type | Type 2 Cable/5m or Type 2 Socket (Lockable) | | |
| | Charging Control | Plug and Charge, RFID Card or APP | | |
| | LCD Display | 4.3" LCD Non-touch Screen | | |
| | Connectivity | Wifi+ Ethernet, 4G (Optional), Solar Compatiable(Optional) | | |
| Environmental | OCPP Protocol | OCPP1.6, Including Smart Charging | | |
| | Storage Temperature | -40 to 65°C Ambient | | |
| | Operating Temperature | -30 to 50°C Ambient | | |
| | Operating Humidity | Up to 95% Non-condensing | | |
| Protection | Cooling Method | Natural Cooling | | |
| | IP/IK Code | IP55 (Enclosure IP66) IK10 | | |
| | RCD | AC 30mA + DC 6mA | | |
| | Electrical Protection | Over Load Protection, Over Current Protection, Residual Current Protection, Short Circuit Protection, Ground Protection, Surge Protection, Over/Under Voltage Protection, Over/Under Frequency Protection, Over/Under Temperature Protection, O-PEN protection(optional for UK) | | |



Products

- Plug&Play for home use
- RFID swiping is optional
- Compact size design
- User-friendly installation method



Tiber AC Series

| | | |
|-------------|--------------------------|---|
| Input | Input voltage | 110~240VAC |
| | Rated Frequency | 50/60Hz |
| Output | Maximum Current | 32A |
| | Maximum Power | 7kW |
| System | Charging Connector | IEC 62196 Type 2 Cable |
| | Cable Length | 5m |
| | Housing Material | PC + ABS |
| | RFID Reader | ISO 14443A / ISO 14443B |
| | Authorization Mode | Plug & Charge (RFID card Option) |
| Protection | Ingress Protection | IP55 (gun head IP67) |
| | Protection | Over Current Protection, Residual Current Protection, Ground Protection, Surge Protection, Over/Under Voltage Protection, Over Temperature Protection, Relay Welding Detection; |
| | Leakage Protection | AC + DC 6mA |
| | Withstand voltage | 1500VAC |
| | Certification Standard | GBT20234.2, GB/T184871, GB/T20234.1-2023 |
| Environment | Relative Humidity | 5% - 95% RH |
| | Working temperature | -30°C-50°C |
| | Cooling | Natural convection |
| | Operating Altitude | <2000m |
| | Package Dimension(W×H×D) | 166mm*240mm*124mm |
| | Net Weight | 4.5 kg |



Products



Sena AC Series

- Up to 10,000 charging cycles
- Works with almost all EVs on the market
- Easy installation with a 5-meter cable and clear LCD display
- Built with PC + ABS housing and IP55 protection, suitable for all weather conditions
- RFID-based authorization for added security
- 2-year coverage for peace of mind



| Parameter | | Model Sena 3.5kW | Model Sena 7kW |
|-------------|--------------------------|--|--|
| Input | Input Voltage | 230VAC \pm 10% | 230VAC \pm 10% |
| | Rated Frequency | 50/60Hz | 50/60Hz |
| Output | Maximum Current | 16A | 32A |
| | Maximum Power | 3.5kW | 7kW |
| | Current Level Adjustment | Multiple levels can be adjusted | Multiple levels can be adjusted |
| System | Charging Connector | Type 2, GB/T | Type 2, GB/T |
| | Cable Length | 5m | 5m |
| | Housing Material | PC + ABS | PC + ABS |
| | Screen & Indicator | 128*64 dots LCD | 128*64 dots LCD |
| | RFID Reader | ISO 14443A / ISO 14443B | ISO 14443A / ISO 14443B |
| | Authorization Mode | Plug & Charge | Plug & Charge, RFID |
| Protection | Ingress Protection | IP55 (Connector head IP67) | IP55 (Connector head IP67) |
| | Protection Features | Over Current, Residual Current, Ground Protection, Surge Protection, Over/Under Voltage, Over Temperature, Relay Welding Detection | Over Current, Residual Current, Ground Protection, Surge Protection, Over/Under Voltage, Over Temperature, Relay Welding Detection |
| | Leakage Protection | A + DC 6mA | A + DC 6mA |
| | Withstand Voltage | 1500VAC | 1500VAC |
| | Certification Standard | IEC-62196-1, IEC-62196-2, IEC-61851-1, IEC-62752 | IEC-62196-1, IEC-62196-2, IEC-61851-1, IEC-62752 |
| | Warranty | 2 years | 2 years |
| Environment | Relative Humidity | 5% - 85% RH | 5% - 85% RH |
| | Working Temperature | -30°C to 45°C | -30°C to 45°C |
| | Cooling | Natural convection | Natural convection |
| | Operating Altitude | <2000m | <2000m |
| Package | Dimension (W×H×D) | 106mm * 246mm * 70mm | 106mm * 246mm * 70mm |
| | Net Weight | 2.4~2.8 kg | 2.4~2.8 kg |

EV Charging Management



Unlimited Integration & Control

- All-in-one solution for managing EV charging for home, business, fleet, and public sector scenarios.
- All end-user services can be white-labelled in order to match your brand, language, and local currency;
- Allow EV driver to find available charging stations;
- Start and stop charging as they wish;
- Pay with various payment methods;
- Extensive end-user management features;
- Branded customer communication;
- Branded mobile Apps;



Share your ideas,
get your unique EVSE !

VISION

Mission

ANARI is committed to becoming a
global leader in the field of
customized EVSE within 3 years.

Shenzhen Anari Energy Co., Ltd.

T: +86-755-85834653

F: +86-755-85834654

E: info@anarienergy.com

Add: 7/F, China Hi-tech Group Building, No.2076, Yueliangwan Avenue, Nanshan District, Shenzhen

www.anarienergy.com

www.anariev.com

Thanks For
Watching

